



Newton Park Primary School

Highland School gets new play area

Client: Newton Park Primary School
Address: Seaforth Avenue, Wick, KW1 5ND
Budget: £24,000
Age Range: Junior

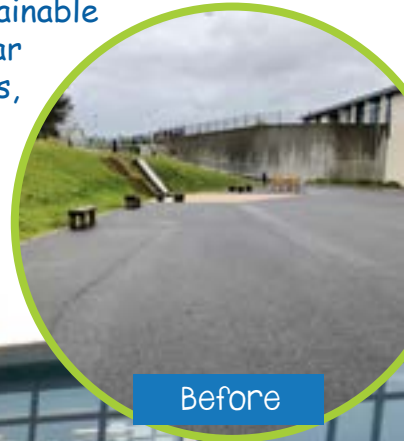
Project Story

With over 300 young children at the primary and early learning school, Newton Park in Wick needed durable play equipment which is able to accommodate a large number of children whilst also being exciting and challenging to use. The Origin range is sourced from sustainable Robinia wood and is suitable for children aged 2+. Characterised by triangular towers, different platform heights, climbing ramps, fixed and mobile bridges, vertical nets and slides, it has many play values.

After

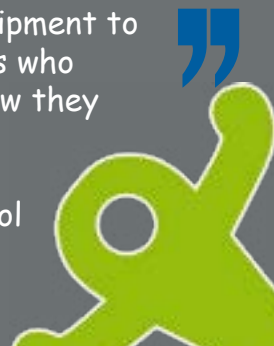


Before



“ The children are very excited about this and so glad to have such wonderful equipment to play on. Parents can see it from the gate and they are also impressed. The teams who provided the installation arrived on schedule and left their work area exactly how they found it. Thank you so much for providing us with this wonderful equipment. ”

Lilian Wark, Headteacher - Newton Park Primary School



Origin Multiplay Unit



Trim Trail



Origin Multiplay Unit



New Play Area



Play for Learning

Playing is a fundamental requirement for a child's development, helping them evolve, both in terms of motor skills and sensory, cognitive, creative and social levels. By playing children actively participate in their own development and growth. Play is, therefore, both the inherent mode of expression for children and is an important learning tool.